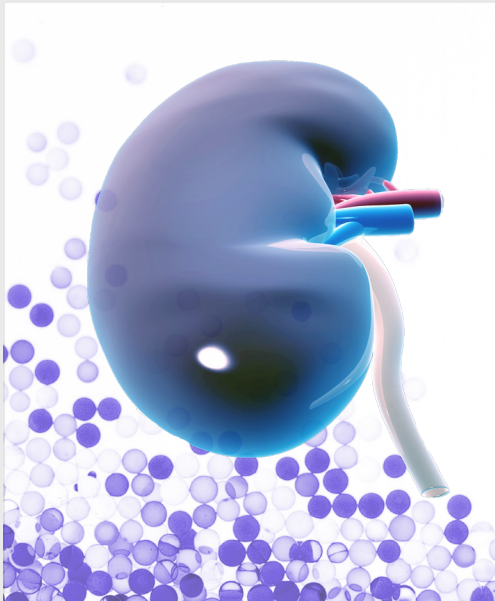


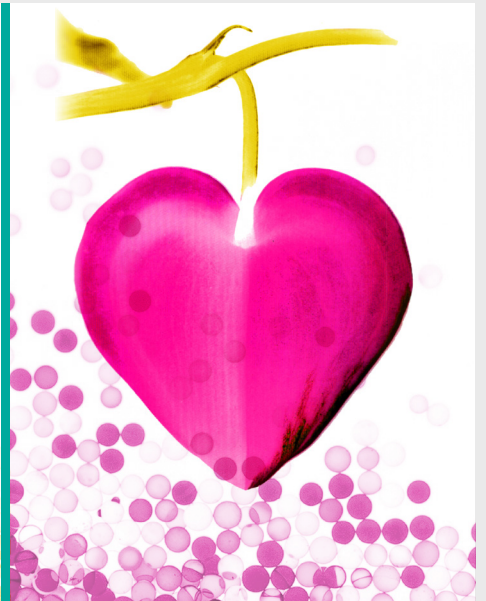
## OUR ELISA KITS DESIGNED FOR YOUR CLINICAL & PRE-CLINICAL RESEARCH



QUANTITATIVE



EASY-TO-USE



RELIABLE

### Features & Benefits

- ✓ Characterized epitope-mapped antibodies
- ✓ Validated for clinical samples according to ICH and FDA guidelines
- ✓ Human serum based calibrators & controls
- ✓ Proprietary products - in-house R&D and production
- ✓ Personal and competent customer service

SERVICE MEASUREMENTS available





**BIOMEDICA develops and produces internationally recognized high quality ELISA kits for clinical research in the field of cardiorenal diseases as well as bone and mineral disorders.**

Our customers include numerous top ranking scientific institutions worldwide, well-known CROs and laboratories in the pharmaceutical industry. We are setting the standard for clinical research using serum-based calibrators and controls, thus enabling researchers to collect biologically reliable data. The provided immunoassays are fully validated. Biomedica's experienced and qualified team of professionals provides technical and scientific support.

The company's manufacturing processes comply with ISO 9001:2015 management system standards and conform to GMP/GLP guidelines.

For specific markers, Biomedica has become a market leader with a continuously growing portfolio. A worldwide distribution network has been established for these products as well as an analytical service, which offers customers in-house diagnostic analysis of their samples.

## **Analytical Testing Service**

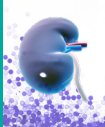

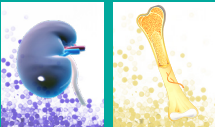
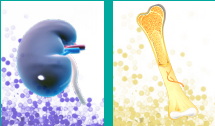
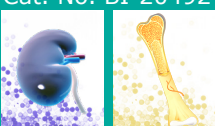
Biomedica offers a comprehensive testing service for all our proprietary ELISAs as well as assays from other brands including Luminex testing services.

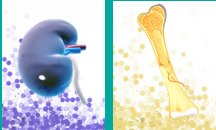




As an experienced ELISA assay developer and manufacturer located in the heart of Europe, our staff contribute to every step in the making of our ELISAs, thereby gaining a unique understanding of the assays' performance.

Using our analytical customized testing service, even customers without access to a fully equipped laboratory or skilled staff are able to obtain reliable biomarker results from samples of both human and animal origin.

## **Advantages**

- ✓ High-quality services
- ✓ Comprehensive results report
- ✓ Expert sample handling
- ✓ Experienced, trained staff

|  |  |
|--|--|
| <p><b>Human Vanin-1<br/>(Urine) ELISA</b></p> <p>Cat. No. BI-VAN1U</p>  | <p><b>Key areas:</b> nephrology</p> <p><b>Related diseases:</b> acute kidney injury, diabetic nephropathy, drug-induced acute kidney injury, hydronephrosis</p> <p><b>Measures:</b> human Vanin-1</p> <p><b>Sample type:</b> urine</p> <p><b>Assay time:</b> 4.5 hr</p> <p><b>Sample volume:</b> 10µl / well</p> <p><b>Use:</b> research use only</p> <p><b>References:</b> 2 (product specific)</p>   |
| <p><b>Vanin-1 Mouse/Rat<br/>ELISA</b></p> <p>Cat. No. BI-VAN1MR</p>     | <p><b>Key areas:</b> nephrology</p> <p><b>Related diseases:</b> acute kidney injury, diabetic nephropathy, drug-induced acute kidney injury, hydronephrosis</p> <p><b>Measures:</b> mouse and rat Vanin-1</p> <p><b>Sample type:</b> mouse and rat serum, plasma and urine</p> <p><b>Assay time:</b> 4.5 hr</p> <p><b>Sample volume:</b> 5µl / well</p> <p><b>Use:</b> research use only</p>   |
| <p><b>Intact<br/>FGF23 ELISA</b></p> <p>Cat. No. BI-20700</p>         | <p><b>Key areas:</b> bone and phosphate metabolism, nephrology, cardiovascular homeostasis</p> <p><b>Related diseases:</b> hypophosphatemia, vitamin D disorders, autosomal dominant hypophosphatemia (ADHR), X-linked hypophosphatemia (XLH), fibrous dysplasia of the bone</p> <p><b>Measures:</b> intact FGF23</p> <p><b>Sample type:</b> human plasma (EDTA, citrate, heparin), protocol for human serum, urine and cell culture supernatant</p> <p><b>Assay time:</b> 3.5 hr</p> <p><b>Sample volume:</b> 50µl / well</p> <p><b>Use:</b> research use only</p> <p><b>References:</b> 9 (product specific)</p> |
| <p><b>C-terminal<br/>FGF23 ELISA</b></p> <p>Cat. No. BI-20702</p>     | <p><b>Key areas:</b> bone and phosphate metabolism, nephrology, cardiovascular homeostasis</p> <p><b>Related diseases:</b> hypophosphatemia, vitamin D disorders, autosomal dominant hypophosphatemia (ADHR), X-linked hypophosphatemia (XLH), fibrous dysplasia of the bone</p> <p><b>Measures:</b> intact and the C-terminal fragment of FGF23</p> <p><b>Sample type:</b> human serum and plasma (EDTA, citrate, heparin)</p> <p><b>Assay time:</b> overnight assay</p> <p><b>Sample volume:</b> 50µl / well</p> <p><b>Use:</b> research use only</p> <p><b>References:</b> 33 (product specific)</p>            |
| <p><b>Sclerostin<br/>ELISA</b></p> <p>Cat. No. BI-20492</p>           | <p><b>Key areas:</b> bone and mineral metabolism</p> <p><b>Related diseases:</b> bone and vascular diseases, osteoporosis, cancer induced bone diseases, renal disorders</p> <p><b>Measures:</b> Wnt-signalling antagonist Sclerostin (SOST)</p> <p><b>Sample type:</b> human serum and plasma (EDTA, heparin), cell culture and urine protocol</p> <p><b>Assay time:</b> overnight assay</p> <p><b>Sample volume:</b> 20µl / well</p> <p><b>Use:</b> research use only</p> <p><b>References:</b> 240+ (product specific)</p>  |

|   |   |
|---|---|
| <p><b>Bioactive Sclerostin ELISA</b></p> <p>Cat. No. BI-20472</p>  | <p><b>Key areas:</b> bone and mineral metabolism</p> <p><b>Related diseases:</b> bone and vascular disease, osteoporosis, cancer induced bone diseases, renal disorders</p> <p><b>Measures:</b> bioactive Sclerostin and Sclerostin fragments; antibody binding occurs in the LRP5/6 binding region</p> <p><b>Sample type:</b> human serum and plasma (EDTA, citrate), cell culture and urine protocol</p> <p><b>Assay time:</b> 3.5 hrs</p> <p><b>Sample volume:</b> 20µl / well</p> <p><b>Use:</b> research use only</p> <p><b>References:</b> 5 (product specific)</p> |
| <p><b>DKK-1 ELISA</b></p> <p>Cat. No. BI-20413</p>                 | <p><b>Key areas:</b> bone and mineral metabolism</p> <p><b>Related diseases:</b> osteoporosis, rheumatoid arthritis, cancer induced bone diseases, vascular calcification, diabetes</p> <p><b>Measures:</b> Wnt-signalling antagonist Dickkopf-1</p> <p><b>Sample type:</b> human serum</p> <p><b>Assay time:</b> 3.5 hrs</p> <p><b>Sample volume:</b> 20µl / well</p> <p><b>Use:</b> research use only</p> <p><b>References:</b> 160+ (product specific)</p>   |
| <p><b>Periostin ELISA</b></p> <p>Cat. No. BI-20433</p>           | <p><b>Key areas:</b> bone homeostasis, tissue development and repair</p> <p><b>Related diseases:</b> osteoporosis, cancer induced bone diseases, cardiovascular diseases, hypertension, respiratory diseases</p> <p><b>Measures:</b> all known isoforms of human Periostin</p> <p><b>Sample type:</b> human serum and plasma (EDTA, citrate, heparin), cell culture and urine protocol</p> <p><b>Assay time:</b> 5.5 hrs</p> <p><b>Sample volume:</b> 10µl / well</p> <p><b>Use:</b> research use only</p> <p><b>References:</b> 16 (product specific)</p>                |
| <p><b>Periostin Mouse ELISA</b></p> <p>Cat. No. BI-20433MS</p>   | <p><b>Key areas:</b> bone homeostasis, tissue development and repair</p> <p><b>Related diseases:</b> osteoporosis, cancer induced bone diseases, cardiovascular diseases, hypertension, respiratory diseases</p> <p><b>Measures:</b> mouse Periostin</p> <p><b>Sample type:</b> mouse serum and plasma, cell culture supernatant protocol</p> <p><b>Assay time:</b> 4.5 hrs</p> <p><b>Sample volume:</b> ≤ 5µl / well</p> <p><b>Use:</b> for pre-clinical use</p> <p><b>References:</b> 3 (product specific)</p>  |
| <p><b>Free sRANKL ELISA</b></p> <p>Cat. No. BI-20462</p>         | <p><b>Key areas:</b> bone and mineral metabolism, thermoregulation</p> <p><b>Related diseases:</b> osteoporosis, diseases with locally increased resorption activity, arthritis, type 2 diabetes, cancer induced bone diseases</p> <p><b>Measures:</b> soluble, uncomplexed receptor RANKL (receptor activator of NF-κB)</p> <p><b>Sample type:</b> human serum and plasma (heparin)</p> <p><b>Assay time:</b> overnight assay</p> <p><b>Sample volume:</b> 150µl / well</p> <p><b>Use:</b> research use only</p> <p><b>References:</b> 280+ (product specific)</p>       |

## Osteoprotegerin (OPG) ELISA

Cat. No. BI-20403



|                          |  |
|--------------------------|--|
| <b>Key areas:</b>        | bone and mineral metabolism  |
| <b>Related diseases:</b> | osteoporosis, arthritis, diseases with locally increased resorption activity, cardiovascular disease, vascular calcification |
| <b>Measures:</b>         | monomeric and dimeric Osteoprotegerin  |
| <b>Sample type:</b>      | human serum and plasma (EDTA, heparin, citrate)  |
| <b>Assay time:</b>       | 5.5 hrs  |
| <b>Sample volume:</b>    | 20µl / well  |
| <b>Use:</b>              | research use only  |
| <b>References:</b>       | 230+ (product specific)  |

## Soluble Semaphorin 4D ELISA

Cat. No. BI-20405



|                          |  |
|--------------------------|--|
| <b>Key areas:</b>        | bone homeostasis, immune response, cell migration, vascularisation, neural connectivity, tumor progression |
| <b>Related diseases:</b> | osteoporosis, arthritis, type 2 diabetes, cancer related bone diseases, neurological diseases              |
| <b>Measures:</b>         | soluble SEMA4D/CD100   |
| <b>Sample type:</b>      | human plasma (EDTA, citrate, heparin), cell culture protocol   |
| <b>Assay time:</b>       | 4.5 hrs  |
| <b>Sample volume:</b>    | 10µl / well  |
| <b>Use:</b>              | research use only  |
| <b>References:</b>       | 4 (product specific)   |

## Total Soluble Neuropilin-1 ELISA

Cat. No. BI-20409



|                          |  |
|--------------------------|--|
| <b>Key areas:</b>        | immunology, osteology, cardiology, nephrology, oncology  |
| <b>Related diseases:</b> | kidney disease, cardiovascular disease, cancer   |
| <b>Measures:</b>         | total soluble NRP1   |
| <b>Sample type:</b>      | human serum and plasma (EDTA, citrate, heparin), protocol for cell culture supernatant, urine, and non-human samples |
| <b>Assay time:</b>       | 4 hrs  |
| <b>Sample volume:</b>    | 10µl / well  |
| <b>Use:</b>              | research use only  |
| <b>References:</b>       | 3 (product specific)   |

## Endostatin ELISA

Cat. No. BI-20742



|                          |  |
|--------------------------|--|
| <b>Key areas:</b>        | angiogenesis, cardiovascular homeostasis   |
| <b>Related diseases:</b> | atherosclerosis, chronic kidney disease (CKD), ischemia, stroke, micro-vascular injury, renal fibrosis, preeclampsia |
| <b>Measures:</b>         | angiogenesis inhibitor Endostatin  |
| <b>Sample type:</b>      | human serum and plasma (EDTA, citrate, heparin)  |
| <b>Assay time:</b>       | 4.5 hrs  |
| <b>Sample volume:</b>    | 10µl / sample  |
| <b>Use:</b>              | research use only  |
| <b>References:</b>       | 4 (product specific)   |

## Endostatin Mouse/Rat ELISA

Cat. No. BI-20742MR



|                          |  |
|--------------------------|--|
| <b>Key areas:</b>        | angiogenesis, cardiovascular homeostasis   |
| <b>Related diseases:</b> | atherosclerosis, chronic kidney disease (CKD), ischemia, stroke, micro-vascular injury, renal fibrosis, preeclampsia |
| <b>Measures:</b>         | angiogenesis inhibitor Endostatin in mouse and rats  |
| <b>Sample type:</b>      | mouse and rat serum and plasma (EDTA, citrate, heparin)  |
| <b>Assay time:</b>       | 2.5 hrs  |
| <b>Sample volume:</b>    | 5µl / sample   |
| <b>Use:</b>              | for pre-clinical use   |
| <b>References:</b>       | 2 (product specific)   |

### NT-proCNP ELISA

Cat. No. BI-20812



**Key areas:** angiogenesis, growth, skeletal development, cardiovascular homeostasis  
**Related diseases:** cardiovascular disease, renal disorders, sepsis, SIRS, pre-eclampsia

**Measures:** NT-proCNP (AA 24-73)  
**Sample type:** human serum and plasma (EDTA, citrate, heparin), protocol for cell culture supernatant, urine, and non-human samples  
**Assay time:** 4 hrs  
**Sample volume:** 20µl / well  
**Use:** research use only  
**References:** 43 (product specific)

### NT-proANP ELISA

Cat. No. BI-20892



**Key areas:** cardiovascular homeostasis, cardiotoxicity in preclinical studies  
**Related diseases:** cardiovascular disease, heart failure, transplants, sepsis

**Measures:** NT-proANP (AA 1-98)  
**Sample type:** human, rat, mouse, cat and dog serum and plasma (EDTA, heparin), cell culture supernatant, urine  
**Assay time:** 3.5 hrs  
**Sample volume:** 10µl / well  
**Use:** research use only  
**References:** 151 (product specific); 14 references: CV safety biomarker in rats)

### NT-proBNP ELISA

Cat. No. SK-1204



**Key areas:** cardiovascular and renal homeostasis, regulation of fatty acid metabolism  
**Related diseases:** obesity, diabetes, renal failure, cardiac impairment, acute myocardial infarction, secondary hypertension

**Measures:** NT-proBNP (AA 1-76)  
**Sample type:** human serum and plasma (EDTA)  
**Assay time:** 3.5 hrs  
**Sample volume:** 50µl / well  
**Use:** research use only  
**References:** 83 (product specific)

### BNP fragment ELISA

Cat. No. BI-20852W



**Key areas:** cardiovascular homeostasis, renal homeostasis, regulation of fatty acid metabolism  
**Related diseases:** obesity, diabetes, renal failure, cardiac impairment, acute myocardial infarction, secondary hypertension

**Measures:** NT-proBNP (AA 1-76) and all fragments containing AA 8-29 of NT-proBNP  
**Sample type:** human serum and plasma (EDTA, citrate, heparin)  
**Assay time:** overnight assay  
**Sample volume:** 30µl / well  
**Use:** research use only  
**References:** 54 (product specific)


### Big Endothelin-1 ELISA


Cat. No. BI-20082H





**Key areas:** regulation of vascular homeostasis  
**Related diseases:** arterial hypertension and cardiovascular disorders, cardiac hypertrophy, cerebral vasospasm

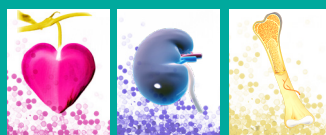
**Measures:** Big Endothelin-1 (AA 1-38)  
**Sample type:** human serum and plasma (EDTA, citrate, heparin)  
**Assay time:** 5.5 hrs  
**Sample volume:** 50µl / well  
**Use:** research use only  
**References:** 72 (product specific)

|  |  |
|--|--|
| <p><b>NT-proBNP<br/>Rat ELISA</b></p> <p>Cat. No. BI-1204R</p>  | <p><b>Key areas:</b> cardiovascular and renal homeostasis, regulation of fatty acid metabolism</p> <p><b>Related diseases:</b> obesity, diabetes, renal failure, cardiac impairment, acute myocardial infarction, secondary hypertension</p> |
|  | <p><b>Measures:</b> NT-proBNP (AA 1-76)</p> <p><b>Sample type:</b> rat serum and plasma</p> <p><b>Assay time:</b> 3.5 hrs</p> <p><b>Sample volume:</b> 10µl / well</p> <p><b>Use:</b> research use only</p>                                  |

|  |  |
|--|--|
| <p><b>Angiopoietin-2<br/>ELISA</b></p> <p>Cat. No. BI-ANG2</p>  | <p><b>Key areas:</b> vascularisation, angiogenesis, inflammation, micro-vascular injury, renal fibrosis, tumor progression</p> <p><b>Related diseases:</b> cardiovascular diseases, chronic kidney disease, autoimmune disease, cancer</p>   |
|  | <p><b>Measures:</b> human Angiopoietin-2</p> <p><b>Sample type:</b> human serum and plasma (EDTA, citrate, heparin)</p> <p><b>Assay time:</b> 3.5 hrs</p> <p><b>Sample volume:</b> 20µl / well</p> <p><b>Use:</b> research use only</p> <p><b>References:</b> 2 (product specific)</p> |

|  |   |
|--|---|
| <p><b>Angiopoietin-2<br/>Mouse/Rat ELISA</b></p> <p>Cat. No. BI-ANG2MR</p>  | <p><b>Key areas:</b> vascularisation, angiogenesis, inflammation, micro-vascular injury, renal fibrosis, tumor progression</p> <p><b>Related diseases:</b> cardiovascular disease, chronic kidney disease, autoimmune disease, cancer</p> |
|  | <p><b>Measures:</b> mouse and rat Angiopoietin-2</p> <p><b>Sample type:</b> mouse and rat serum and plasma</p> <p><b>Assay time:</b> 5.5 hrs</p> <p><b>Sample volume:</b> 5µl / well</p> <p><b>Use:</b> research use only</p>             |

|   |   |
|---|---|
| <p><b>IL-6<br/>ELISA</b></p> <p>Cat. No. BI-IL6</p>  | <p><b>Key areas:</b> inflammation, cancer, cardiology, nephrology, bone metabolism</p> <p><b>Related diseases:</b> sepsis, rheumatoid arthritis, systemic juvenile idiopathic arthritis, Casteleman's disease, metabolic syndrome, Covid-19</p> |
|   | <p><b>Measures:</b> human IL-6</p> <p><b>Sample type:</b> serum, plasma (EDTA, heparin, citrate), cc supernatant, urine</p> <p><b>Assay time:</b> 4.5 hrs</p> <p><b>Sample volume:</b> 100µl / well</p> <p><b>Use:</b> research use only</p>    |

|  |  |
|--|--|
| <p><b>VEGF<br/>ELISA</b></p> <p>Cat. No. BI-VEGF</p>  | <p><b>Key areas:</b> cancer, angiogenesis, inflammation, cardiology, bone metabolism</p> <p><b>Related diseases:</b> rheumatoid arthritis, psoriasis, psoriatic arthritis, diabetes and diabetic kidney disease, diabetic retinopathy, obesity</p>                           |
|  | <p><b>Measures:</b> human VEGF (all circulating isoforms incl. VEGF165b)</p> <p><b>Sample type:</b> serum, plasma (EDTA, heparin), cc supernatant, urine</p> <p><b>Assay time:</b> 4.5 hrs</p> <p><b>Sample volume:</b> 10µl / well</p> <p><b>Use:</b> research use only</p> |

## OxyStat Assay

Cat. No. BI-5007



**Key areas:** oxidative stress, cardiology

**Related diseases:** cardiovascular diseases

**Measures:** biological peroxides

**Sample type:** human serum, EDTA plasma, biological fluids

**Assay time:** 15 min

**Sample volume:** 10µl / well

**Use:** research use only

**References:** 51 (product specific)

## oLAB ELISA (Anti oxidized LDL autoantibodies)

Cat. No. BI-20032



**Key areas:** oxidative stress, cardiology

**Related diseases:** cardiovascular diseases

**Measures:** autoantibodies to oxidized human low density lipoprotein (LDL)

**Sample type:** human serum

**Assay time:** 2 hrs

**Sample volume:** 20µl / well

**Use:** research use only

**References:** 68 (product specific)



**BIOMEDICA**



[www.bmgrp.com](http://www.bmgrp.com)

**BIOMEDICA Medizinprodukte GmbH**

Divischgasse 4 · 1210 Vienna · Austria · EUROPE · [www.bmgrp.com](http://www.bmgrp.com)

T +43 1 291 07 45 · F +43 1 291 07 6389 · [info@bmgrp.com](mailto:info@bmgrp.com)