

## DATA SHEET

### Anti human C4d Antibody (C4dpAb)

Cat. no.: BI- RC4D

For Research Use Only.

**Source:** rabbit polyclonal

**Quantity:** 250 µl/vial

**Form:** liquid IgG fraction, purified by protein G chromatography

**Immunogen:** synthetic peptide (15-mer peptide corresponding to aa 1242-1256 of C4) specific for human complement split product C4d coupled to KLH (keyhole limpet haemocyanine).

**Specificity:** The antibody will identify human complement split product C4d

**Application:** The antibody has been tested for use on paraffin sections and frozen sections of human tissue. Working protocol available.  
Recommended dilution for immunohistochemistry: 1:30 – 1:50  
Pretreatment of slides by pressure cooking (5 minutes at +125°C in TRIS/EDTA buffer pH 8.5) is highly recommended for antigen retrieval.

**Stability:** Storage and transport temperature: +4°C.  
The antibody is stable at +4°C up to the expiry date.

**Shelf life:** Expiry date is stated on the label.

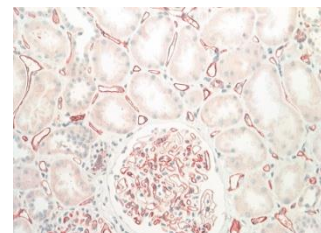
#### Literature:

1. Regele H et al. "Endothelial C4d deposition is associated with inferior kidney allograft outcome independently of cellular rejection". *Nephrol Dial Transplant* 2001, 16:2058-66

2. Böhmig GA et al. C4d-positive acute humoral renal allograft rejection: effective treatment by immunoabsorption. *J Am Soc Nephrol*, 2001 Nov;12(11):2482-9

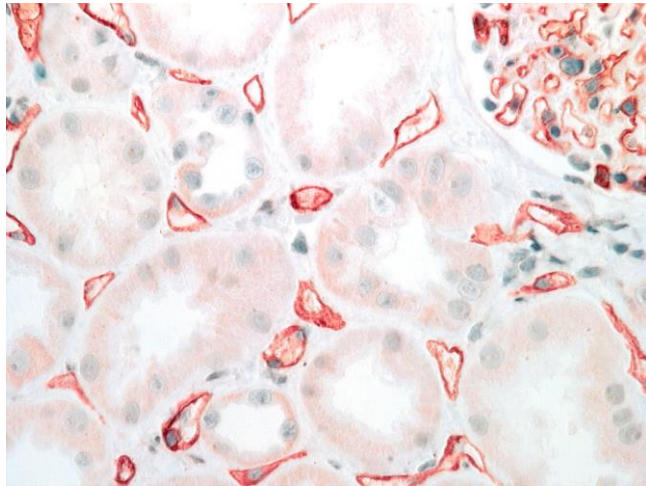
3. Böhmig GA et al. Capillary C4d deposition in kidney allografts: a specific marker of alloantibody-dependent graft injury. *J Am Soc Nephrol*. 2002 Apr;13(4):1091-9.

4. Regele H et al. „Capillary deposition of complement split product C4d in renal allografts is associated with basement membrane injury in peritubular and glomerular capillaries: a contribution of humoral immunity to chronic allograft rejection". *J Am Soc Nephrol*. 2002, 13:2371-80

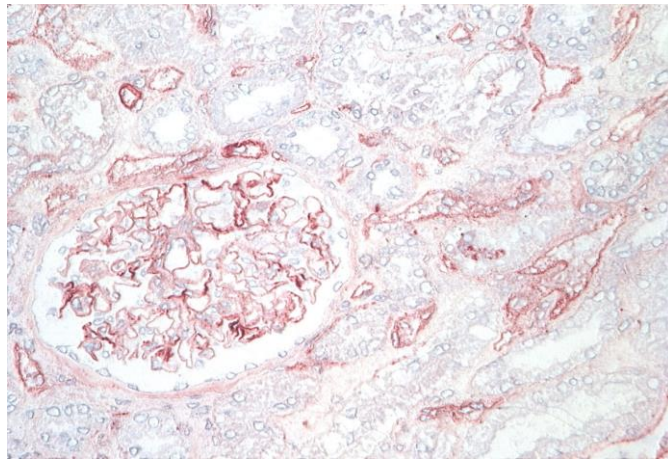


rev.no: 220524 (replacing 190111)

## Microphotographs of Anti human C4d Antibody (C4dpAb)

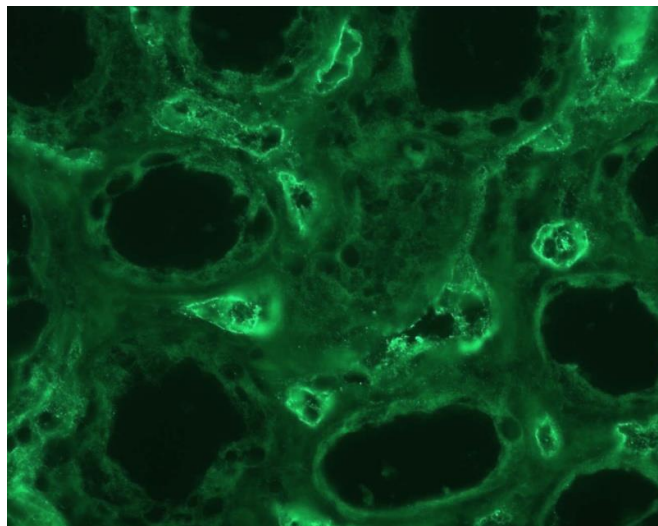


paraffin embedded tissue sections



Cryosections

## Immunofluorescence Microphotographs of Anti human C4d Antibody (C4dpAb)



Dilution 1:20

rev.no: 220524 (replacing 190111)