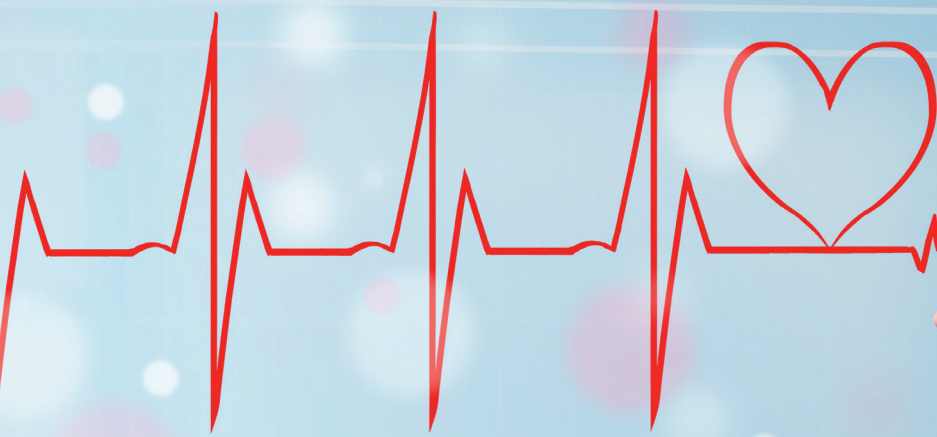


# NT-proBNP ELISA



**Cost-effective tool**  
for the accurate  
diagnosis of heart failure

**Flexible and  
independent solution**  
can be run in every lab

**CE marked**  
for IVD use



# NT-proBNP ELISA (Cat.No.SK-1204) CE

## NT-proBNP: For the ACCURATE DIAGNOSIS of HEART FAILURE

### Why measure NT-proBNP?

NT-proBNP is the N-terminal 76 amino-acid cleavage product of proBNP that is released from cardiac ventricles in response to increased wall stress and volume overload.

NT-proBNP has a longer half life in the circulation (120 minutes) compared with the C-terminal BNP peptide (20 minutes). Therefore, the measurement of NT-proBNP offers **excellent stability** in serum/plasma **for reliable results**.

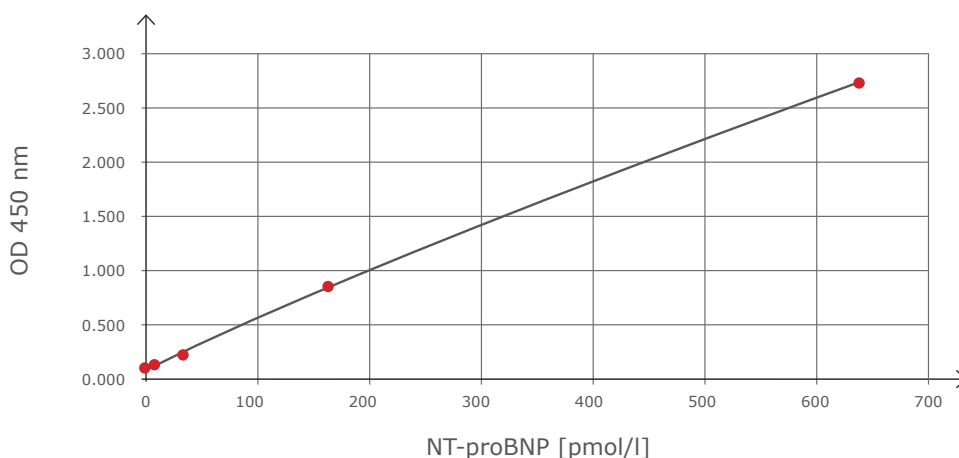
### Features and Benefits

- COST EFFECTIVE TOOL – low price / analysis
- INDEPENDENT – can be run in every lab manually or on open systems
- CE MARKED – for IVD use
- EASY – conventional 96 well format
- WIDE DYNAMIC RANGE – enables accurate detection of early stages of heart failure

### Assay Characteristics

- Method: Sandwich ELISA, HRP/TMB, 12x8-well strips
- Sample type: Serum, EDTA plasma
- Sample size: 50 µl/test
- Standard range: 0-640 pmol/l
- Detection limit: 3 pmol/l
- Incubation time: 3 h / 30 min
- Unit conversion: 1 pmol/l = 8.475 pg/ml

### Typical Standard Curve of NT-proBNP ELISA



### Performance Characteristics

- PRECISION Intra-assay (n=6) < 4% Inter-assay (n=8) < 7%
- RECOVERY Serum (n=4): 93-113% EDTA-Plasma (n=4): 80-102%
- LINEARITY Serum (n=4): 112-120% EDTA-Plasma (n=4): 89-98%