

DKK-1 ELISA

BIOMEDICA



NO SAMPLE PREDILUTION

NEW: CE marked!

DAY-TEST

Setting the **standard**
for **clinical** research.



DKK-1 ELISA (BI-20413) CE

DKK-1: A REGULATORY MARKER OF BONE TURNOVER

Dickkopf-1(DKK-1) is a 28.67 kDa secreted protein that acts as soluble inhibitor of the WNT signalling pathway. This pathway contains lipid-modified glycoproteins that activate cell surface receptor-mediated signal transduction to regulate cell activities like: cell fate, proliferation, migration, polarity and gene expression. DKK-1 regulates developmental processes of all kinds. Thus, DKK-1 is also involved in the regulation of bone metabolism as it effects osteoblast differentiation and in regulation of tumourgenetic activity. Areas of interest: rheumatoid arthritis, myeloma bone disease, oncology etc.

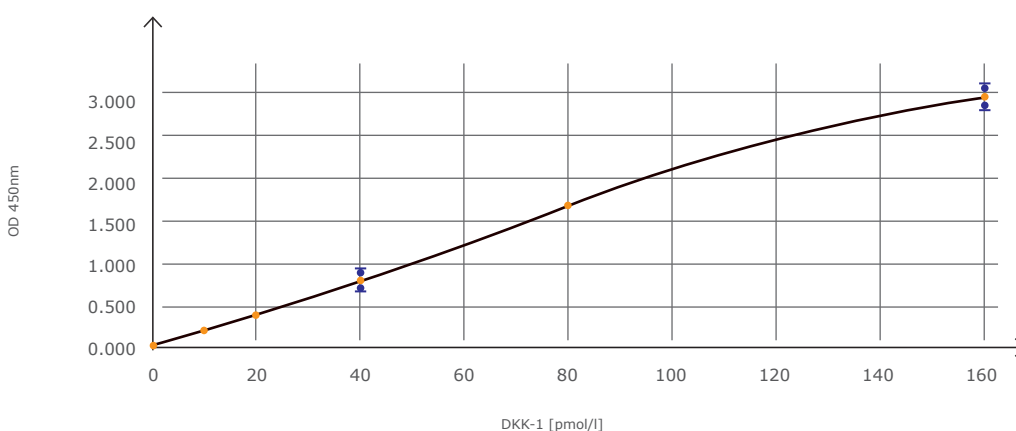
Features and Benefits

- Day test
- Direct measurement – no sample predilution
- 20 µl sample volume only!
- Wide dynamic standard range
- Fully validated for use with human serum samples
- 6 standards + 1 control (all in human serum matrix!)
- Convenient ready to use protocol

Assay Characteristics

- Method: Sandwich ELISA, HRP/TMB, 12x8-well strips
- Sample type: Serum
- Sample size: 20 µl / test
- Standard range: 0 – 160 pmol/l
- Detection limit: 1.7 pmol/l
- Incubation: 2 h / 1 h / 30 min (room temperature)
- Unit conversion: 1 pg/ml = 0.039 pmol/l (MW: 25.8 kDa)

DKK-1 Standard Curve



Related Biomedica Products

- Sclerostin ELISA, Cat.No. BI-20492
- OPG ELISA, Cat.No. BI-20403
- Free soluble RANKL ELISA, Cat.No. BI-20462
- FGF23 (C-terminal) ELISA, Cat.No. BI-20702